




Puppy Training

the

Natural Way

www.GalenaAussies.com

- HOW TO PICK  OUT THE RIGHT PUPPY FOR YOU
- PUPPY PROOFING YOUR HOME
- OBEDIENCE TRAINING
- AND MUCH MORE!



www.DOGGYDVD.COM

Breed Specific - Entertainment - Fundamentals - Training - Whelping

Introduction

Welcome to the fun, fantastic, thrilling and challenging world of puppy rearing. From very personal experiences I can vouch for all of the above emotions plus a few more as well. You are in for what could be one of the most rewarding experiences of your life.

Within this publication, I hope to offer you some simple, down to earth methods and techniques to help you along in your journey.

Some ideas you may have heard of before, some you may not. Remember, there may be more than one answer or solution for any one particular question or problem that arises. Consideration has to be given to your puppy's breed, personality, purpose of that particular breed, physical size and body structure when applying a method. I will give you as many options as I can in the various topics following this introduction section.

We stick to "Mother Nature's" methods of correction and praise when dealing with puppies or dogs since this is the language they will immediately understand, comprehend and respect. Mother Nature's way as we have seen fit to term it, works for all breeds. The intensity of this method will vary from dog to dog. You will learn more about this unique method we have studied as we progress. Why Mother Nature's method? Simply, there has been over the years as many methods developed by different trainers as there are fads from the Beatles of the 60's to disco of the early 80's. We are not saying that these methods don't work but we choose to use the most natural of all.

Included in this puppy manual are such topics as:

- How to pick out the right puppy for you
- Pre-preparations before the puppy comes home
- Puppy proofing your home
- Housebreaking
- Biting or nipping
- Proper and appropriate Toys
- How to make these “Toys” work as teaching tools.
- Accurate corrections
- Discipline
- Energy burn off
- Training equipment

It is best to start right away so your puppy learns at a very early age to be an acceptable member of the family and reliable companion dog. You must keep an open mind when dealing with your new puppy. Patience is crucial but you must also think about the method that will best work for your specific puppy’s personality. Just as all people are different in character, so are puppies. What works with one pup may need to be adjusted a bit to suit your own puppy. The important thing to remember is to discipline the puppy for an inappropriate behavior and love them to pieces the moment the behavior is altered.

Just as human children go through various stages of development, so does a puppy as it matures towards adulthood. (i.e. infant, toddler, elementary, adolescence, puberty and finally adulthood.) Good luck, have fun with your new puppy. The first five months will go by very quickly so start as soon as possible down that road of mutual “RESPECT” between you and your pooch.

Picking The Right Puppy For You

First and foremost, it's a great idea to research the various breeds you are interested in. The general look that interests you is a good place to start. For example, if you prefer a breed with stand up, perky ears, then you should eliminate the floppy eared and cropped ear breeds. Then you must decide for what purpose are you acquiring a dog. Will it be a housedog when mature, laying at the foot of your bed, or on your bed, or out on the doorstep being a guardian? Will you have the extra time if the breed requires extra recreational playtime? Are you willing to put the time into grooming that some dogs require, especially the ones with the long hair? Once you've narrowed the choices down, your next job is to locate a reliable breeder.

One good breeder resource is to contact a few kennel clubs in your area. Ask them for a breeder referral list for the breed of your choice. Contact by telephone is more courteous and can give you a valuable and non-threatened first impression than dropping in on the person or facility unexpected. These should be good, reliable breeders but don't be afraid to ask for names of previous buyers. Remember, any good breeder will check out their potential puppy purchasers before releasing a pup into their hands. This is a very common practice. Next, set up an appointment to go to see the litter and if possible both parents. They will give you a general idea of what you can expect from the puppy as an adult as far as the looks and size go. The breeder's facility should be clean but keep in mind if you are going to see a litter of puppies, you may see an unscheduled poop spot or pee puddle. First observe the puppies while standing back from the whelping box or kennel area. Watch to see which ones are pushy with their littermates and which ones are content to observe from the corner. Which ones roughhouse play? Who makes the others cry by biting too hard in

play? This puppy could be the tough guy or gal of the litter...or the ALPHA puppy. This would not be a great choice for a family with small children or first time puppy owners as it could want to control the family household and members. Ask the breeders if they could isolate the alpha puppy so you could observe the rest in a fairer environment. Now you are at the stage of deciding: Male or Female.

Doggy DVD Recommended Dog Supplies

[Dog Supply Superstore](#)

Once you have your puppy home, you will start to develop its personality the way you want. If you know which sex you want, ask the breeder to put the other sex away to give you time to observe all the males or all the females. Don't pick a particular puppy just because it is the cutest! There are easy tests you can do yourself to help you determine the best choice for you. Watch them to see which puppy is watching you, making direct eye contact with you. Take a couple steps backwards away from the puppies and look closely at who moves with you. Next, take a few more steps from the group and clap your hands, snap your fingers or verbally call to encourage the puppies to follow.

Open your arms in a wide fashion and call to the puppies in a higher pitched voice. Again, observe the followers. These pups would be the ones interested in human beings, thus making good companion dogs. Narrow your choices down to 2 or 3 from those couple of little tests. Next, take each puppy in your hands. Balance its weight by supporting it under the rear and on the chest. Observe

the pup's reactions at this point. Is the pup struggling to break free, growling or showing it's teeth; These are negative signs in inexperienced hands and definitely need to be corrected very early in the pup's life. If the pup is comfortable and relaxed, maybe even licking your face or hands, then those are positive signs and those of a more submissive puppy.

Another quick test is the "rollover test" where you gently roll the pup over in your arms into a cradle position. Again the pup should be calm and relaxed. If not, try a simple growl correction to test the pup's submission level. If it quickly freezes in a still position, that means the pup will probably accept human discipline easily. However, if the struggle continues, be prepared for some headstrong behaviors in the future. After socializing with each puppy a few minutes, place it back down on the floor and repeat the "walk away and follow me test". Observe the pups for the quickest reaction to your leaving them. The quickest one to follow you could be the strongest bonding potential puppy from your choices. Repeat the procedures as a double-checking system. If you're happy with the results and the pup is attractive to you, then that's the one for you.



[JustAboutDogs](http://www.JustAboutDogs.com)
EBAY STORE

www.DOGGYDVD.COM
VIDEOS FOR ALL YOUR DOG NEEDS!

Puppy Proofing Your Home

For the first couple days when you first bring your new puppy home, it probably won't get into too many dangerous situations, but once he feels a bit at home, brace yourself, the curiosity level will start to overcome your sweet little puppy. Therefore, some preparations around your home need to be taken to insure safety for the pup and your belongings. Usually, a veterinary clinic can provide a list of poisonous houseplants. Certain ones can be deadly to your puppy. The movement of the leaves of the plant is very motivating to your puppy, so it's a best bet to move all plants out of his reach, especially in the rooms where the pup would be unsupervised.

Also, Place all breakable or valuable ornaments or treasures up out of his reach. Removing the items eliminates the possibility of frustration and destruction of these articles, however if you choose to leave them within reach, you must be prepared to make the appropriate corrections when the pup investigates. For correcting the pup for handling inappropriate household articles, I have found that sound and voice corrections work the best. When you see your pup interested or involved with an off limits item, stomp your foot, or clap your hands and use a very stern "NO" command.

The pup almost always will immediately stop the behavior and look at you providing you do the correction properly. If he's not leaving the item, then you must go to him and remove him from it. Urgent tones in your voice are usually enough to distract the pup from his own curiosity interests. However, if you're short on training time or patience, perhaps the prevention method would be best for the early stages of the pup's home life.

Soft clothing articles like sneakers, leather shoes, socks and other assorted undergarments simulate soft animal like objects that are irresistible to your puppy. To a puppy, these are play items that if left laying around, are there for his or her enjoyment, so prepare the family members to keep things off the floor as they are fair game to the pup. Now remember we are talking about a puppy. As the dog gets older and starts bonding, these items begin to replace your presence when you are not home due to a stronger human scent that accompanies these items.

Of course, there are many, many household items that need to be removed from the puppy's reach. Items such as pin cushions, sewing needles, household cleaners, soaps, candy dishes, pens, pencils, thumb tacks, paper clips, yarn, paint, modeling clay, crayons and the list goes on and on. Puppy proof your home for your new puppy in the same way as you would for a toddler aged child. That would be the best guideline anyone could give you.

Decide where you would like the puppy's bed to be. If you choose the mat beside your bed, that's fine. If the laundry room is your choice, that's OK too. The important thing is to have a plan before the pup comes home. Gather a few old blankets or large towels together so that you have a reserve stockpile to pull from. Don't choose your next to best linens (to honor the new arrival), as the puppy will probably eat them or at least chew interesting patterns in them. All puppies chew. It's nature's way of reducing painful cutting and growing of baby teeth. They also chew to relieve stress from built-up energies within themselves or from simple boredom.

Depending on the breed you choose, puppies will chew anything from toilet paper to gyp rock to wallboard. Preventative measures are the best method of correcting the problem, which leads us into the next topic of toys.

Proper and Appropriate Toys

You will find it very handy and convenient to have a toy box or basket in each room that the pup spends the majority of it's time in. (i.e. Living room, family room, kitchen, bedroom, or the room where the pup sleeps.) One of these entertainment boxes may not be needed in all rooms, but certainly the most frequently used rooms do. Four or five articles in each basket is a good plan. The puppy needs a variety of textures and sizes to vent out different areas of canine instinct. For example, soft , plush type toys simulate small mammals to your puppy. Remove the toys eyes & noses for safety. If the pup was still with it's mother instead of with you, she would be teaching it how to stalk, hunt and even perhaps ingest small mammals to survive. Those instincts are still active even though we humans provide them with an expensive, balanced diet. Therefore by allowing them to have access to furry, little stuffed toys it enables them to vent this natural instinct.

You may see your puppy stalk or sneak up on this type of toy, then pounce on it, play with it by tossing it around the floor or through the air then pounce on it again. They can spend several minutes on this procedure at one time and literally be having a ball. They will mouth the object and may even shred it pretending to eat it. If this happens, remove the article and give him another. Certain breeds of dogs will exhibit this behavior much more than others, so experiment a bit with your individual puppy.

Rawhides are a good pacifier until the puppy starts eating them like candy sticks. When the puppy is under 6 months he probably will use them up slowly, but once the adult teeth come in, cut back on the amount you're allowing him, as this could lead to digestive

problems. Rubber toys in various shapes are available on the market as well. These come in all shapes and sizes and make super entertainers. Of course, no toy box is complete without a ball of some sort in it.



Tennis balls, the orange ball hockey balls, soccer balls, footballs and big soft baseballs seem to be favorites to the medium to large size sized breeds. For the smaller breeds, squash balls and tennis balls seem to be their favorites. Certain breeds like border collies, labrador and golden retrievers, etc. seem to enjoy Frisbees as toys. This is not necessarily a favorite of all pups. Without access to the items mentioned above, your puppy will find his own toys amongst the families belongings. This could include slippers, mats, shoes, cushions, couches, chair legs, cushion flooring, woodwork, etc.

We have all heard the horror stories of people coming home to find that “FIDO” ate through their living room sofa. Why?? Because he had free access to it, plus a reserve of energy that needed to be

burnt off and no toys were left out for him to devour while mom and dad were at work.

How to use these toys as Teaching Tools

Try to keep in mind during your interactive playtimes with the pup, that every action, word or command carried out can become a valuable part of the pup's schooling and education. For example, simply tossing a toy for the pup actually has the potential to teach your puppy to retrieve on command, recall or return to you on command, sit on return to you and give up the article without a struggle or fight. All of these situations are basic, meaning that the pup will use these commands over and over again all through its life. The earlier you start to focus the pup on these commands, the easier you and puppy will slide through the puppy months.

Breaking Down The Segments Of The Retrieving Exercise

1. Have a flat leather or nylon collar on your pup for this type of session. You also need a 30 to 40 foot energy burn off rope, (if playing outdoors) and attached to his collar (See energy burn off in topic #5). This is crucial to insure a safe playtime and accurate training session s well.
2. Next, get the puppy excited over the toy or article. Toss it out a couple of feet from where you are to warm the puppy up. Command to the puppy "Take It", (while it is still moving), using a fun and energetic voice. As soon as he takes the

article, turn and start running from him so that he has to run to catch you. Start off by making these catch-up distances quite short, about 10 to 20 feet. As he's closing in on you, turn and face him, calling out his name and the command "COME". Coach him with lots of "GOOD PUPPY" praise.

3. When he's almost to you, bend down to his level with open arms. Remember, if the pup gets too silly or out of control at any time, the long line is there to reinforce your commands. Should he refuse to come to you, simply reel him in like a fish line and praise heavily with voice and hands when he gets to you.

4. Once within arms reach, command "SIT" to the pup. If he's facing you, lean forward over him while he's still in the we are having fun frame of mind. If he still resists, just apply a bit of pressure on the indent spots near his hips. (Feel along the pups backbone and just before the hip bones you will feel 2 indent areas. Place your thumb in one and your middle finger in the other, on the opposite side. These I refer to as the indent spots). Do not press straight down or firmly. Your puppies bones are growing and you don't want to put unnecessary pressure that could perhaps contribute to future problems. Rather than pressing, guide the puppies rear end back and down in a 45-degree manner towards the floor, into a sit position.

5. Once in a "SIT" position, command "GIVE" to the puppy. Now most puppies want to hang on to the article and start the tug-of-war process. If this happens just pry his mouth open, using your thumb and middle finger over the top of the muzzle. Push his own lip in-between the jaws and guaranteed, your pup will gladly spit out the article. This method eliminates the possibility of the pup

putting tremendous bite pressure on one of your fingers while teaching him the command “GIVE“.

6. On the release of the article, instantly give tons of “verbal and hands on praise”. Repeat the process a few more times gradually adding a bit more distance for the recall each time.

7. Depending on the breed that you have will determine the number of repetitions you need to do in a session. (i.e. a border collie can go on endlessly, where as a laid back personality may only tolerate 2 or 3 reps at one time.) The most important thing to remember is to keep this playtime fun for both you and your puppy. Stop when either of you have had enough so that neither party sours on the activities. There is nothing wrong with teaching the puppy the “ENOUGH” command. This is another verbal, growl type of command that your pup is familiar with as he has heard it from his mother at very early stage. When she had “ENOUGH“ of the puppy silliness, she would growl in a disciplinary tone that basically told the puppy to back off and entertain itself for a while. Hence the reason for the growling tone.

Now a good tug of war game is lots of fun for your puppy, However there is a right and wrong way to play the game. You can play tug of war type games with your puppy, if the article is a doggy type article. Not the towel off the kitchen stove. You see, you must win at the game and the trick to success is to force the pup to release the article to you with the “GIVE“ command, then toss it away and allow him to retrieve the article himself. If you were to give in and release the article to the pup in the heat of the game, then you are teaching him that he is stronger than you, both physically and mentally.

This is a terrible foundation to start the training process from. He would already disrespect you as a strong leader in his eyes. If you choose to play this game, ensure your winning then return the

article to the pup for his use and amusement. Otherwise, avoid the game altogether.

ENERGY BURN OFF

Most all puppies have big bursts of energy at one time of the day or another. These energy burn off times can be a positive or negative experience. Lets analyze the positive first. If an energy burn off comes up when you are at home with your pup, it can provide you with an excellent opportunity to structure some really fun and educational use of a playtime. The results of this type of session are easy training, fun learning plus the added bonus of a tired out pup at the end of it all. A tired pup is a quieter and less destructive pet in the house. For this reason, I recommend working owners or busy families, to try at all costs to have an energy burn off session with the puppy before leaving for the day. Even 5 to 10 minutes will make a tremendous difference.

Then place your puppy in the most puppy-proof room or spot available in your home. A garage is OK if it has been completely puppy proofed and the temperature is reasonable for your particular breed. Provide lots of chewy things, and an old blanket or towel. (OLD so that when you come home and find it shredded you can laugh as you sweep it into the garbage and replace it with another old one.) Remember, what you give him in that restricted area is his, so don t leave anything you are too attached too.

Playing a radio also helps soothe the puppy and give him a feeling of not being left alone. Someone really should try to exercise the

puppy at least every 4 hours if possible. In some situations this is impossible, but don't feel guilty. Your pup will adjust to whatever lifestyle you provide for it. Perfection is not what is important to your pup. Your mutual love and his respect for you are what really count. Now you actually have to have respect for your puppy as well but, don't forget you are the master, not the puppy. Like your children, you love them and respect their space but you still are the parent. And, to be sure, kids should love and respect their parents. At least that is the ideal situation. Ordinary walks are good for your pup but these are not energy burn off where the pup rips and tears around at full speed, being himself, a silly, clumsy, typical puppy.



Another great way to keep your puppy occupied is with the
Puppy Play Date Canine Entertainment DVD

AVAILABLE AT
www.DOGGYDVD.COM

JustAboutDogs
EBAY STORE

NEGATIVE ENERGY BURN OFF

These are definitely not fun for you but your puppy will have a real ball. This type of energy burst happens when you have not removed the stored up reserves before leaving the puppy alone. Your puppy becomes very creative in his method of energy release. Even in a confined area like a laundry room or a kitchen, he will find all kinds of things to amuse himself. Things like chewing on baseboard or doorframes, lifting up or shredding the cushion floor, clawing window frames or tearing curtains down.

Do you see the picture? Not a pretty one at all. Probably for this reason, many puppies are given up, sold or placed in humane shelters for behavior that is really not their fault. Just simple lack of knowledge on the owners part can destroy many good pups. Can you imagine what giving free-roam to a whole house would do to a puppy energy burn off time. Pretty great party for the puppy but beyond comprehension for the owner. (How could our beloved FEEFEE do this assault to the couch when we love her and trust her with the whole house to live in.) POSITIVE OR NEGATIVE. It's really up to the owners to provide the proper direction for the puppy.

www.DogInfopedia.com

The Web's Dog Information Center

HOUSE BREAKING

It is a good idea to find out if possible, exactly what the puppy's environment was before you brought him home. This will tell you what the puppy was accustomed to messing on in the early stages of life. (i.e. was it a newspaper litter box style, sawdust or shavings as in a barn or pet store, cement floor as in a kennel run, or maybe a grass bottom playpen.) This information will help to determine what will immediately work for your puppy. The most common method of housebreaking is paper training. When using this method, you will need to spread papers, a couple layers thick in a certain area of the puppies most used room in the house. Also, you will need to spread some newspapers in the area of the yard where you want the puppy to make his bathroom. (of course weather permitting) Weight these down with rocks or bricks in the beginning stages.

Try to not allow the puppy to have access to the whole house as this is just too much territory for him to be able to handle in the early stages. This only reinforces long-term housebreaking. Gradually over the first 4 months, after you have brought him into your home, can you start allowing him access to other areas unsupervised. When you catch the puppy in the act, but missing the papers, gather him up in your arms, scold him with a growling **BAD PUPPY, OUTDOORS**, and take him outside to the designated bathroom area. Do this quickly. Move quickly so your body language give the right message to the puppy as a sense of urgency. Set him down on the ground and repeat in a command voice "Hurry up!" "Hurry up!" You could use other words rather than hurry up, words of your personal choice, but hurry up sounds better than "pee pee". Especially if your in a public place.

When the puppy has done it's duty, and only then, start to praise. "Good boy/girl!", Outdoors -this is spoken in a praising tone. Even if the puppy has finished inside the house, praise him anyway. You are relaying to the pup that messing in the house is bad, messing outside is good. If your puppy doesn't do anything after 5 minutes, pick him back up and bring him back inside with you. Supervised housebreaking with proper correction and praise will be much more effective than if puppy is left outside alone after an in-house accident has occurred. With puppy out of sight, clean up the mess with paper towels to remove the access and then deodorize the area with a neutralizer cleaner available at most veterinary clinics or pet stores. If the puppy is present during the cleanup, he will sense your hostility again and become confused. The positive reinforcement with praise outside could be lost.

Helpful Hints to make the task easier

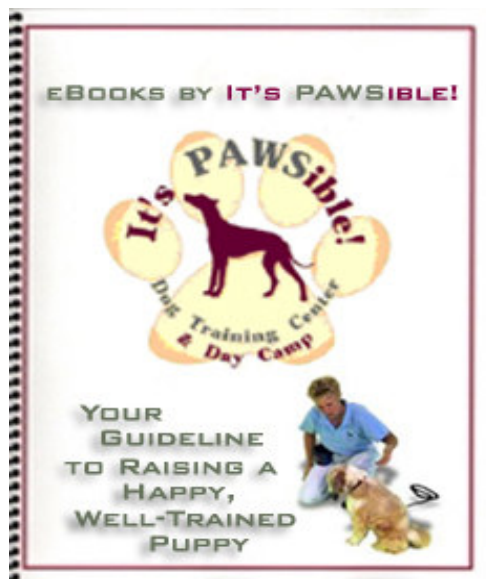
1. When your puppy wakes up from a nap, even a 5-minute snooze, almost every time he will have to relieve himself. Gather him up in your arms and take him outside to his spot. Repeat the word OUTSIDE to him as you are on route to the spot. Place him on the newspapers or prepared area and wait. He may move onto a grassy area near the papers. That's super, that's the goal. Encourage him with the key phrase that you want to use every time as "Hurry up". Whatever term you use, just be consistent. Do not praise with Good boy/girl until the pup is completely finished, then lay on the praise and continue on your way. Use this procedure after a playtime, meal, nap, confinement or first thing in the morning and last thing at night. Keeping a pair of slip on shoes by the door will make an emergency exit more effective for you and the pup.

2. Keep your puppy on a feeding and watering schedule. The best method for puppies 6 weeks to 4 months is to feed 3 times a day if possible. Early morning, late noon, and again in early evening. Allow him access to water during feeding times but restrict the amount so he does not intake too much and become stuffed or bloated. This could lead to a serious intestinal situation, requiring veterinary help. What he leaves in his food bowl, pick it up and place it out of his reach. About 1/2 bowl of water could be left with the pup for drinking between meals. His body will adjust to a feeding schedule very quickly, therefore making housebreaking very predictable. Simply realize that the puppy will have to relieve himself within 5 minutes after he eats so be prepared to make the trip outside to his spot. Be consistent with the scheduling and the task of housebreaking will be much quicker. If you need to change the puppy's food type, it is very important that you do it gradually slowly adding the new type to the old, small amounts at a time. Your pup could become ill if the change is made too quickly.

3. Crate training or room confinement of your pup while you can't be there will greatly help your goal of housebreaking. At first you may feel this is a mean gesture on your part but it actually can be the opposite for your puppy. He actually regards the crate as a den or his private territory. Two to 3 hours at a time is a long enough time span. Once accustomed to it, puppies will often retreat to their special den for a nap time even when you are at home. Do not feed or water the pup in his crate, however, do leave several small toys in there for entertainment and companionship. Most puppies will not eliminate in their sleeping quarters so they learn to hold on until they are taken out side. If a crate is not in your budget, use a small room like a laundry room, washroom or barricaded off den or kitchen. A whole house is just too much for puppy to respect in the early stages.

4. When your puppy does get into a mess or does an undesirable behavior, no matter how cute he is in the situation, **DO NOT LAUGH AT HIM**. This will encourage him to do it again because he may interpret it as a positive attention getting action. Discipline the puppy first then afterwards when you are sure the puppy has an understanding that what ever happened wasn't a good thing, you can gently and slowly give soft pats and gentle hugs. As if to say, "I still love you but don't do it again". Don't get real excited and have too happy a face or the puppy may not get the feelings of your true emotions. Remember your puppy is reading body language as well as the tone of your voice and even perhaps the few words he is starting to catch on to. They do learn quick and what you wish to accomplish here is a level of understanding and respect on the learning puppy's part.

5. If your puppy is frantically struggling with you, perhaps he needs a break from the play or training, so a trip outside to his spot is in order.



This eBook will

Help you train your puppy to stop having accidents in the house - Keep you from spending one more dollar replacing rugs and furniture - Save your skin from your nipping, biting puppy - Give you the motivation you need to survive crate training - Prevent your dog from becoming aggressive towards people or other dogs

[JustAboutDogs](#)

EBAY STORE

BITING OR NIPPING

Almost all puppies want to bite, chew or nip at their owners hands while they re being handled. This would be a normal behavior if still with his litter mates because this is part of the process of determining the pack leader within the litter. It is now up to you as the puppy's new master to become the pack leader in his eyes. This will not happen by accident. You must begin at a very early age to establish the order of the pack within your own household. When your puppy growls at you or grabs your hands or fingers, immediately give him a scruff of the neck correction and a very stern growling command, "NO". The scruff of neck correction is taking the back of the pups neck in your hand, give a stern shake and suspend the puppy 1 or 2 inches off his front feet for a few seconds, then gently easing him back to 4 feet on to the floor.

Calmly praise him as the nasty behavior subsides. This method imitates what the mother would do to her puppy to settle a bratty behavior. Her reward would be to lick the puppy's face sweetly as the behavior settled. Do not allow anyone to play aggressively in a Roughhouse manner. This only reinforces aggressive behavior towards people. Also, blowing in a pup s face will produce a snappy biter. Instead, teach the pup to play with toys such as balls, rawhide toys and other puppy articles.

Often puppies will resort to biting or mouthing during a playtime. This is not to be tolerated as it too becomes part of the play. The scruff of neck correction works well on most puppies, although very persistent pups may need a slightly stronger type of discipline. Using your fingertips, apply slight pressure to the top of

the muzzle with a strong growl NO. This again is a mother's correction, therefore communicating clearly to the pup the error of his behavior. Some high-energy pups respond very well to a high pitched OUCH sound. It's the shocking sound of the squeal type of voice that makes the pup take notice. They initially learn these sounds with their litter mates and mother and what they mean. Biting, mouthing and nipping all take time to stop completely. This is a learning process your pup needs to work through and it will take repetitions before he catches on. One of the above methods may work or you may have to apply all of them. It depends on your pup and his response. Be patient but remember, persistence removes resistance.

If you were really fortunate, you picked up your puppy at an age of 10 weeks old directly from the mother's home or kennel. And, if the pup's mother was a good mother like most, she would have taught the pup that pressing hard with its teeth hurts. Usually, this kind of puppy, will mouth your hands gently in play knowing through its litter mates that mouthing hard hurts. Now if you have a puppy that you purchased at a pet store and it's 6 weeks old, chances are that the puppy may have been 4 weeks old once it left its mother so your job is a little more important because you have to replace some of those "mother nature" instincts normally taught to a puppy...naturally. We try to emphasize on this mother nature method everywhere we can throughout this publication. Even if your puppy arrived at your home over 10 weeks old this only means that your training job will be a little easier.

DISCIPLINE AND LOVE

As the puppy's owner and master you will want to raise that pup to be the very best that it can be. This can only happen if the pup **RESPECTS** you. Respect does not mean that the dog trembles when you walk into a room. That's fear. Respect is a deep admiration for who you are and what you represent in your pup's life. When your dog respects you, he looks straight into your eyes and awaits your next command. He is willing to work or play, comfort and console when you need him. This type of respect comes from the early stages of handling him in the areas of love and discipline.

They must go hand in hand through the early stages of puppy ownership. It is important to note that too much discipline and strictness without love will create a fearful dog and perhaps even a fear biter. On the other hand, too much unearned adoration and praise from you will cause your pup to grow up thinking only of himself as king of the house, very selfish and self-centered. This can happen all too easy if the balance is not maintained. Discipline is not smacking your pup for something he has done. It means correcting him in a method as close to nature as possible so that he understands clearly the errors he's making. Then bounce back with love and forgiveness once the pup shows signs of submission and sorrow due to not pleasing you. Forget the transgression and carry on.

www.DogInfopedia.com

The Web's Dog Information Center

ACCURATE CORRECTIONS

Various corrections have already been described in the other topics you have already read. Also, all the obedience corrective methods are explained in the obedience section of this publication. However the most important thing to remember about any correction is that you are direct, assertive, clear and quick to respond. Even seconds in hesitation to correct will give your pup time to become creative. This is why timing is so important. Your pup will actually start to believe that you know when he's going to do something wrong. When this starts to happen, your pup will begin to think out his actions before doing them, appearing to us as understanding right from wrong.

EARLY OBEDIENCE TRAINING

The methods and exercises you're learning in this puppy manual are designed to teach your puppy to respond to your commands, love, discipline and praise because he respects you, not because he's afraid of you or because he thinks he will get goodies if he pleases you. Do not use food as a reward for an obedience command, rather use it as a friendship tool especially in an abused puppy. Obedience training builds a bond between you and your puppy if mutual respect on both parties is established at an early age. With young puppies, attention span is very short, therefore, repetition of an exercise is more important than the length of time he holds the position.

Once you start obedience training, your puppy may try temper tantrums to control you and the situation. These come in several forms ranging from the puppy crying out at the top of his lungs in protest to your command, to biting the leash, to laying flat on the floor, refusing to move. These are all temper tantrums and have to be dealt with as they happen. When they attack their own leash, give a quick pop on the lead and collar with a stern “NO”. If the pup lays out flat, give a “Let’s Go” command and use the body language of thumping your thigh or clapping your hands to get the pup up and moving.

Your puppy is very capable of learning several obedience commands at a very early age. The earlier you start to structure their minds the better it is. Don’t think that waiting until the pup gets older and not as hyper is going to make the job easier. Waiting allows the pup to decide for itself right from wrong, which usually means that a pup is totally out of control by the time it reaches 6 months old. The exercises your pup will learn are all meaningful. There is a logical purpose for every command.



[Doggy DVD Recommended Dog Supplies](#)

By purchasing this ebook you have taken the first step for your dog or puppy. We commend you for caring enough to learn the ‘**Natural Ways**’ to have a great relationship with your pooch.

-TO TAKE THE NEXT STEP-

WE HIGHLY RECOMMEND THE AWARD WINNING



IT'S PAWSIBLE! DOG & PUPPY TRAINING DVD



**INTRODUCING THE IT'S PAWSIBLE! FIVE WEEK
PET DOG OBEDIENCE TRAINING COURSE ON DVD**

**CLICK ON THE LINK FOR FREE SAMPLES OF THIS
AWARD WINNING PREMIUM DOG TRAINING DVD**

WWW.DOG-TRAINING-VIDEO.COM

This eBook is Copyright protected by Library of Congress Laws
Images and text may not be altered under any circumstances!

© 1999 –2008 Galena Aussies
All Rights Reserved